

Flight Plan

Designed by Kristy Daum of St. Louis Folk Victorian
Featuring the Bold & Gold Collection by Ampersand Design
Size: 68" x 68"



Check www.windhamfabrics.com Free Project section to see if there are any pattern updates before you start your quilt








WINDHAM FABRICS


812 Jersey Ave ~ Jersey City, NJ 07310 ~ 201.659.0444 ~ FAX: 201.659.9719
www.windhamfabrics.com email: retail@windhamfabrics.com

Flight Plan

Page 2

Fabric Requirements:

Fabric	Quantity Needed
 40744M-2 : White	3 1/4 yards
 40742M-X : Multi	1 1/4 yard
 40746M-1 : Black	1/4 yard
 40744M-1 : Black	1/4 yard
 40745M-1 : Black	1/4 yard

Fabric	Quantity Needed
Backing	4 1/4 yard
 Binding :: 40745M-1 Black	1/2 yard

Before You Begin:

- Read through all directions first
- All seam allowances are a scant 1/4"
- RST stands for "Right Sides Together"
- WOF stands for "Width of Fabric"
- Fabric requirement assumes 40" between selvages
- Extra fabric will be required if using directional prints or if pre-washing your fabric

Cutting Instructions (Blocks):

Multi 40742M-X

- Cut (2) 3 1/2" x WOF strips, sub-cut each into (6) 3 1/2" x 6 1/2" rectangles; for a total of (12) rectangles.

Black 40746M-1

- Cut (2) 3 1/2" x WOF strips, sub-cut each into (6) 3 1/2" x 6 1/2" rectangles; for a total of (12) rectangles.

Flight Plan

Page 3

Black 40744M-1

- Cut (2) 3 1/2" x WOF strips, sub-cut each into (6) 3 1/2" x 6 1/2" rectangles; for a total of (12) rectangles.

Black 40745M-1

- Cut (2) 3 1/2" x WOF strips, sub-cut each into (6) 3 1/2" x 6 1/2" rectangles; for a total of (12) rectangles.

White 40744M-2

- Cut (2) 12 1/2" x WOF strips, from each strip cut (2) 12 1/2" x 12 1/2" squares for a total of (4) squares.
- Cut (9) 3 1/2" x WOF strips, sub-cut each into (11) 3 1/2" x 3 1/2" squares. You will use (96) of these squares.
- Cut (8) 3 1/2" x WOF strips, sub-cut each into (6) 3 1/2" x 6 1/2" rectangles.

Cutting Instructions (Borders):

Multi 40742M-X

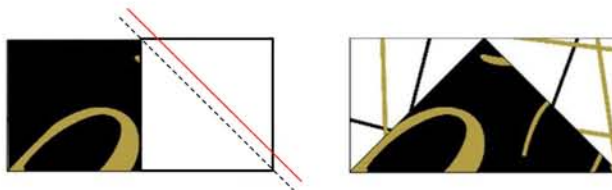
- Cut (6) 4 1/2" x WOF strips

White 40744M-2

- Cut (7) 6 1/2" x WOF strips

Making The Flying Geese Blocks:

1. Take (2) 3 1/2" x 3 1/2" White 40744M-2 squares and lightly mark a diagonal line on the wrong side. This is the sewing line.
2. Following the Block A diagram, sew (1) 3 1/2" x 3 1/2" White square to (1) 3 1/2" x 6 1/2" Multi 40742M-X rectangle RST on the diagonal line drawn in Step 1. Leaving a 1/4" seam allowance, cut off the excess fabric and press the remaining triangle shape open. Repeat for the other 3 1/2" x 3 1/2" White square until you have a finished Flying Geese Block.
3. Repeat Steps 1 & 2 until you have completed (12) Flying Geese blocks.
4. Using the 3 1/2" x 6 1/2" rectangles you cut out in the other fabrics Black 40746M-1, Black 40744M-1, and Black 40745M-1 repeat Steps 1-3 so you have (12) finished Flying Geese blocks of each.



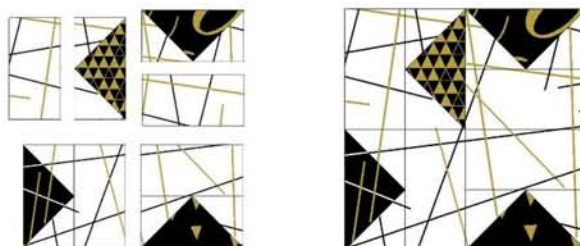
WINDHAM FABRICS

Flight Plan

Page 4

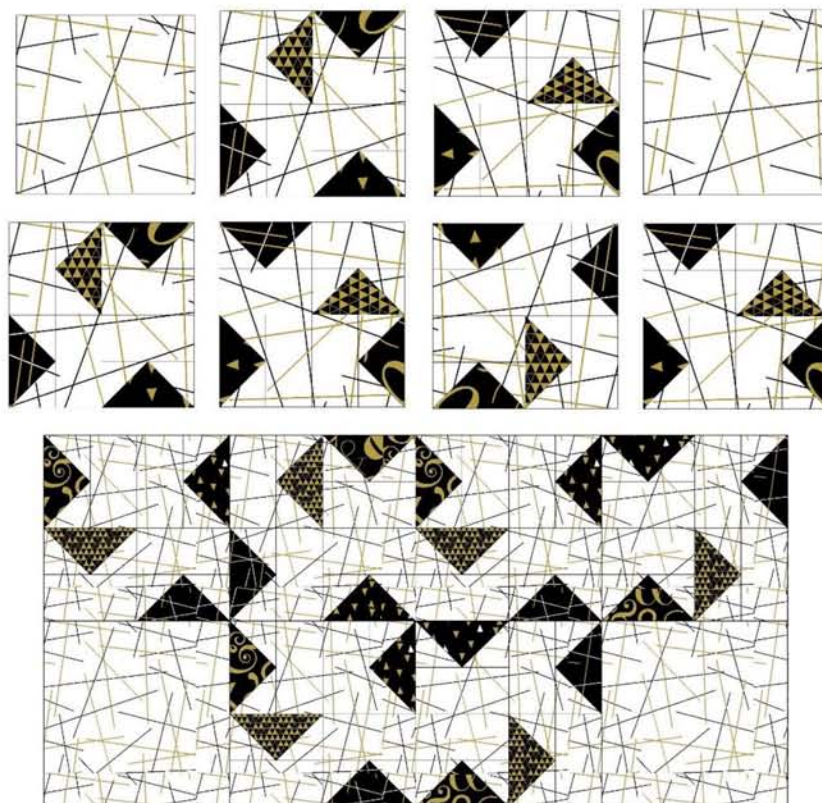
Piecing The Blocks:

1. Sew (1) 3 1/2" x 6 1/2" Flying Geese Block to (1) 3 1/2" x 6 1/2" White 40744M-2 rectangle RST. Press.
2. Repeat Step 1 until you have made a total of (12) units from each fabric combination.
3. Following the diagram, sew the units made in Step 2 RST, being sure to only use (1) of each fabric combination per block. Repeat until you have made a total of (12) blocks. Press.



Laying Out The Blocks & Sewing Rows:

1. Following the **Row diagram**, lay out the blocks being sure to rotate as shown.
2. Add the 12 1/2" x 12 1/2" White 40744M-2 squares where needed.
3. Sew the blocks RST and repeat until all four rows are finished. Press.



WINDHAM FABRICS

Flight Plan

Page 5

Adding Inside Border:

1. Take (1) 4 1/2" x WOF Multi 40742M-X strip and cut (1) 4 1/2" x 17" length and (1) 4 1/2" x 8" length.
2. Repeat Step 1 with another 4 1/2" x WOF Multi 40742M-X strip.
3. Sew (1) 4 1/2" x WOF Multi 40742M-X strip to (1) 4 1/2" x 8" length RST along the short side. Repeat one more time to create the additional border. Press.
4. Sew the borders made in Step 3 to the right and left sides of the quilt top. Press and square up the borders.
5. Sew (1) 4 1/2" x WOF Multi 40742M-X strip to (1) 4 1/2" x 17" length RST along the short side. Repeat one more time to create the additional border.
6. Sew the borders made in Step 5 to the top and bottom of the quilt top. Press and square up the borders.

Adding Outside Border:

1. Take (1) 6 1/2" x WOF White 40744M-2 strip and cut (2) 6 1/2" x 17" lengths.
2. Take (1) 6 1/2" x WOF White 40744M-2 strip and cut (1) 6 1/2" x 29" length. Repeat one more time to create a total of (2) 29" lengths.
3. Sew (1) 6 1/2" x WOF White 40744M-2 strip to (1) 6 1/2" x 17" length RST along the short side. Repeat one more time to create the additional border. Press.
4. Sew the borders made in Step 3 to the right and left sides of the quilt top. Press and square up the borders.
5. Sew (1) 6 1/2" x WOF White 40744M-2 strip to (1) 6 1/2" x 29" length RST along the short side. Repeat one more time to create the additional border. Press.
6. Sew the borders made in Step 5 to the top and bottom of the quilt top. Press and square up the borders.

Finishing The Quilt:

- Due to the size of the quilt, you will need to piece the back. Please be sure to leave a minimum of 4" excess on all sides for ease of quilting.
- Press your quilt top and backing, so they are wrinkle-free and flat.
- Layer your quilt top, batting and backing.
- Baste.
- Quilt as desired.
- Bind the quilt using your favorite method.

Be sure to visit www.windhamfabrics.com to see the complete collection and to download this and other Free Projects

